

## DESCRIPTION

AMC MODEL SW-218-2A-112 IS A REFLECTIVE BROAD BAND SPDT SWITCH MODULE WITH INTEGRAL TTL DRIVER, DESIGNED TO OPERATE AT +33 dBm CW SIGNAL.

## SPECIFICATIONS

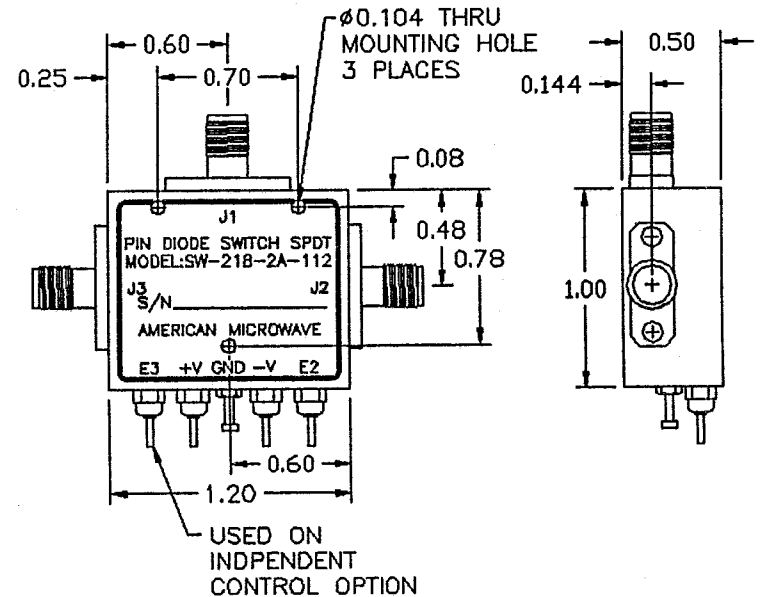
- FREQUENCY RANGE ..... 0.3-18 GHz MINIMUM
- INSERTION LOSS ..... 0.3-4.0 GHz, 1.2 dB MAXIMUM  
4.0-8.0 GHz, 1.3 dB MAXIMUM  
8.0-12.0 GHz, 2.0 dB MAXIMUM  
12.0-18.0 GHz, 2.5 dB MAXIMUM
- ISOLATION ..... 0.3-4.0 GHz, 75 dB MINIMUM  
4.0-8.0 GHz, 70 dB MINIMUM  
8.0-12.0 GHz, 65 dB MINIMUM  
12.0-18.0 GHz, 55 dB MINIMUM
- VSWR (ON) ..... 2:1 MAXIMUM
- SWITCHING TIME  
RISE (10% RF TO 90% RF) ..... 50 ns MAXIMUM  
FALL (90% RF TO 10% RF) ..... 50 ns MAXIMUM  
ON (50% TTL TO 90% RF) ..... 100 ns MAXIMUM  
OFF (50% TTL TO 10% RF) ..... 100 ns MAXIMUM
- RF POWER RATINGS ..... +33 dBm CW, MAXIMUM
- CONTROL ..... TTL COMPATIBLE, UNITY LOAD  
1 DEPENDANT CONTROL (TOGGLE)  
LOGIC "0" J1-J2 PATH ON  
LOGIC "1" J1-J3 PATH ON
- POWER SUPPLY ..... +5VDC ±5% @ 65 mA MAXIMUM  
-5VDC ±5% @ 50 mA MAXIMUM
- CONNECTORS  
RF INPUT/OUTPUT ..... SMA (FEMALE)  
POWER ..... SOLDER PIN (EMI)  
CONTROL ..... SOLDER PIN
- SIZE ..... 1.20" x 1.0" x 0.50"

## AVAILABLE OPTIONS

- A01 ..... 50Ω CONTROL IMPEDANCE
- A02 ..... 100Ω CONTROL IMPEDANCE
- A03 ..... INVERSE CONTROL LOGIC (LOGIC "0", J1-J3 PATH ON)
- A04 ..... 2 INDEPENDENT CONTROLS (LOGIC "0" INSERTION LOSS)
- A05 ..... INPUT/OUTPUT VIDEO FILTER (0.5 dB EXCESS LOSS)
- A14 ..... J1 SMA MALE, J2 AND J3 SMA FEMALE
- A15 ..... J1 SMA FEMALE, J2 AND J3 SMA MALE
- A17 ..... ±9 VDC TO ±18 VDC SUPPLY

ZONE		REV.	DESCRIPTION	DATE	APPROVED
A			ORIGINAL RELEASE, JOB # 207186E	11/22/92	<i>MJ</i>

## MECHANICAL OUTLINE



### NOTES:

- 1) DIMENSIONS ARE IN INCHES
- 2) TOLERANCES: X.XX ±0.020  
X.XXX ±0.010
- 3) WEIGHT: APPROX. 1.4 OZ

## ENVIRONMENTAL RATINGS

- TEMPERATURE ..... -55°C TO +95°C (OPERATING)  
-65°C TO +125°C (STORAGE)
- HUMIDITY ..... MIL-STD-202F, METHOD 103B COND. B
- SHOCK ..... MIL-STD-202F, METHOD 213B COND. B
- VIBRATION ..... MIL-STD-202F, METHOD 204D COND. B
- ALTITUDE ..... MIL-STD-202F, METHOD 105C COND. B
- TEMPERATURE CYCLE ..... MIL-STD-202F, METHOD 107D COND. A



## AMERICAN MICROWAVE CORPORATION

7311G GROVE RD., FREDERICK, MD. 21701  
TEL: (301) 662-4700 FAX: (301) 662-4938

APPROVALS	DATE
DRAWN <i>WSP</i>	11/22/92
CHECKED <i>[Signature]</i>	11/22/92

PRODUCT FEATURE		
SW-218-2A-112		
0.3-18 GHz, REFLECTIVE, HIGH POWER, SPDT SWITCH MODULE		
SIZE A	SHEET 1 OF 2	DWG. # 100-2878